

My roadmap My espace santé

I would like my solution to be referenced in the Mon espace santé catalog of services.

The referencing process and registration tools are available.

Preparatory phase

Find out what you need to do and who you need to contact to prepare for referencing. Find time-saving tips and tricks.

START

Learn more about Mon espace santé

GIE SESAM VITALE

ADMINISTRATIVE

I submit my referencing request

GIE SESAM VITALE

Referencing phase

Find out more about all the steps involved in applying for referencing of your digital solution. The technical stage does not apply to solutions that do not exchange data and documents with Mon espace santé.

COMPLIANCE

I assess compliance with referencing criteria in the dedicated path on the Convergence platform.

ANS

RENEWAL

I renew my referencing request

CONTINUOUS ASSESSMENT

My solution is being evaluated on an ongoing basis

Processus de spécifique

Je prends connaissance du processus spécifique pour le référencement avec échange de donnée de ma solution

TECHNICAL

Check that my solution is connected to Mon espace santé

Our time-saving tips

Getting to grips with the HL7® FHIR® standard

- HL7® FHIR® is the latest interoperability standard for the healthcare sector. It's a standard that's designed to be quick and easy to implement. It offers:
 - On the one hand, a catalog of resources, objects representing actors or concepts in the domain. For example: the Patient resource represents a patient, Appointment represents an appointment, Observation a health measure...
 - And on the other hand, exchange methods for these resources based on the latest web technologies and in particular a REST API
- Start browsing the standard specification at <https://hl7.org/FHIR/>

Getting to grips with the interoperability framework

- The interoperability framework for healthcare information systems, or CI-SIS, sets the rules for communicating medical informatics. It consists of a set of functional and technical specifications, based on international standards, with the aim of facilitating communication and information sharing in the healthcare and medicosocial fields.
- Some components of the interoperability framework apply in the use cases of feeding or consuming Mon Espace Santé resources, notably the Shared agenda management component, the Sharing health documents on the move component or the business layer components that specify the structured format of shareable health documents in the [DMP \(Dossier Médical Partagé\)](#).
- Start browsing the interoperability framework components on <https://esante.gouv.fr/interoperabilite/ci-sis/espace-publication>

What the referencing process is and isn't

- **This is a process** to ensure that candidate digital tools align with technical requirements and industry best practices
- **But it's not a process** of labeling or certification, nor an assessment of candidate digital tools' compliance with all applicable regulations (e.g. RGPD), nor the evaluation of medical relevance

Learn more about Mon espace santé

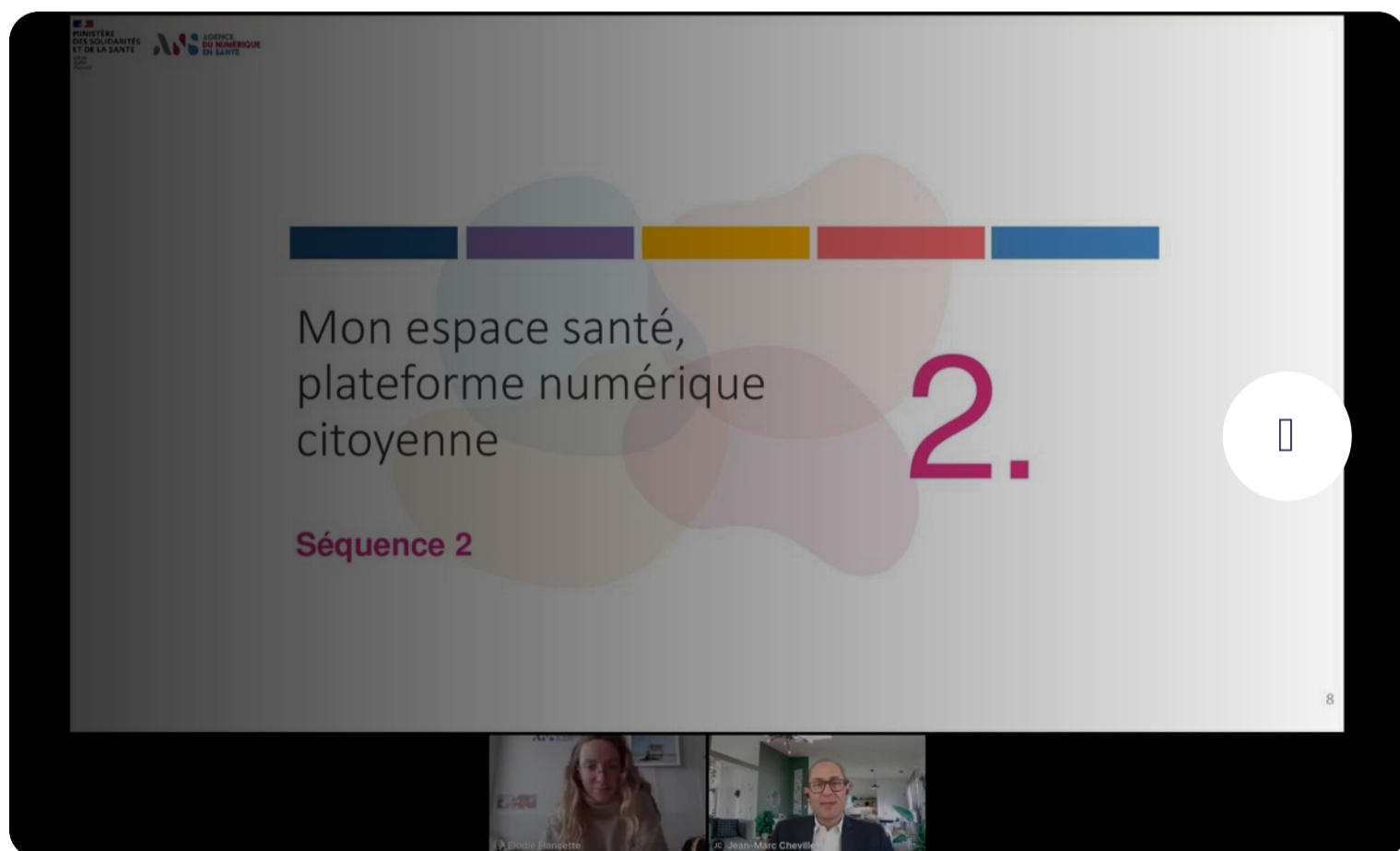
01. I get the documentation

On GIE SESAM-Vitale's Espace Industriels site, you can get all the documentation on the work in progress on the Service Catalogue approval process. This work is being carried out with 30 entrepreneurs and manufacturers as part of a Call for Applications (CFA).

START [GIE SESAM VITALE](#)

I download the documentation from the referencing request portal

Find the complete guide to referencing to the Mon espace santé service catalog and frequently asked questions from [the referencing request portal](#) dedicated to publishers of digital healthcare solutions



Webinar "Mon espace santé" referencing

View the replay of the webinar "Referencing Mon espace santé" from February 23, 2022

[See the replay](#)

Need help?

If you have any questions, please contact GIE SESAM-Vitale
. Contact centre-de-service@sesam-vitale.fr

02. Connect to my Convergence account

COMPLIANCE **ANS**

I do not yet have an account on the Convergence platform

- We invite you to **create your account** on the [iSC Identity Provider](#) enabling you to access the Convergence platform thereafter.
- To sign up for a scheme, your structure's representative must be registered on the **Identity Provider** as its representative.

I already have an account on the Convergence platform

You have registered for the Convergence platform, you can connect directly by clicking on this [link](#).

Need help?

For any questions or difficulties encountered concerning Convergence, contact the ANS by e-mail: ans-support-convergence@esante.gouv.fr

I submit my referencing request

Prerequisites

You must have downloaded and consulted the doctrine of digital health: [Access the doctrine](#)

Our advice

The referencing request is made at the same time as the hanging tests (next step).

03. My preliminary application is considered

ADMINISTRATIVE **GIE SESAM VITALE**

The eligibility of my digital service is assessed

I complete the administrative form available on the Convergence platform.

GIE SESAM-Vitale validates the admissibility of my request

If my application is admissible is compliant, GIE SESAM-Vitale then sends me **my personalized referencing file** as well as **the agreement to be signed**

My application is admissible if:

- My digital solution complies with the technical doctrine of digital health at the levels expected by Mon espace santé.
- My digital solution is concerned by referencing. To find out if you are concerned, check on the [Lcheck if my digital service is concerned](#) of the G_NIUS.

website.

04. I submit my application

ADMINISTRATIVE

Fill in my referencing file

I complete [the referencing request form](#) and sign the agreement.

I officially enter the referencing process to the Mon espace santé service catalog.

Need help?

For all my questions, I can contact GIE SESAM-Vitale support at: centre-de-service@sesam-vitale.fr

I assess compliance with referencing criteria in the dedicated path on the Convergence platform.

Prerequisites

- I have submitted my administrative file on the Convergence platform and my Agreement has been validated by GIE SESAM-VITAL

Our advice

Consult the exhaustive list of referencing criteria [here](#).

To learn more about Convergence, consult all the useful documentation:

- [Consult the industrial user guide](#)

05. I assess the maturity level of my solution

COMPLIANCE **ANS**

I take the referencing path to Mon espace santé in Convergence

- I fill in the information expected in the Guided My Referencing approach.
- I complete the orientation questionnaire, which displays the criteria applicable to my solution.
- In Convergence, information and evidence concerning ethical criteria are expected. To fill them in, you'll need to use the [Ecoscore](#) tool. Please note: a technical profile is required to use [Ecoscore](#).
- Once you've completed your questionnaires, you'll need to generate an evaluation file number and apply.

[Connect to Convergence](#)

Need help?

For any questions relating to the journey in Convergence, contact the ANS by e-mail: ans-support-convergence@esante.gouv.fr

06. My file is studied

COMPLIANCE **ANS**

My referencing file is evaluated

- The team of experts in charge of the evaluation analyzes my referencing file and the proof of compliance.
- I respond to any requests (requests for additional information, handling of non-conformities).
- The evaluated service is studied by the referencing commission during which one of the "opinions" is issued: favorable, favorable with non-suspensive reservations, favorable with suspensive reservations, unfavorable

07. Avis de la commission et publication du service

INITIAL ASSESSMENT **ASSURANCE MALADIE** **DNS** **GIE SESAM VITALE**

Obtention de l'avis de la commission indépendante

- Je remplis les **conditions** :
 - La commission donne un **avis favorable**
 - Le ministre chargé de la santé rend une décision de référencement
 - Les tests techniques de bout en bout et de raccordement aux API sont réussis (si je suis un parcours avec échange de données avec Mon espace Santé)
- Je reçois une notification du référencement, accompagnée de la décision du ministre chargé de la santé

Référencement de mon service

Publication au catalogue de services de Mon espace santé :

- Mon service est référencé et apparaît dans le catalogue de services de Mon espace santé pour une durée de 2 ans.

I renew my referencing request

08. I fill in the renewal form

COMPLIANCE

ANS

GIE SESAM VITALE

Completing the renewal form

- I am contacted by GIE Sesam Vitale teams 2 months before the end of my referencing period to complete the renewal form
- I complete the form, indicating whether I have made any changes to the criteria entered in the initial assessment or to my service.
- If I have made any changes, I must declare the nature of the modifications and whether I am still compliant with the decree.
- My form is analyzed by the experts in charge of evaluating my file.

09. Opinion of the commission

FINALISATION

ASSURANCE MALADIE

DNS

GIE SESAM VITALE

Obtaining the opinion of the independent commission

- As with the initial referencing, my file goes before the referencing commission.
- I receive a favorable opinion
- My service is renewed for a period of two years, during which I will be evaluated, or in the case of a formalized alert by a third party.

My solution is being evaluated on an ongoing basis

What is it?

Continuous evaluation is the process of assessing solutions that have been referenced and is conducted to **verify that the service complies with the digital health strategy and the specific requirements of Mon espace santé**.

It ensures that the declared elements **remain compliant over time**.

The continuous assessment of services undergoing referencing is conducted:

- Either as part of a continuous assessment of the service's compliance
- Or as part of a report of non-compliance with referencing requirements by a third party or a competent authority

The [decree of November 20, 2023](#), regarding the audit procedure for digital tools and services undergoing referencing in the digital health space service catalog defines its organization and key stages.

In the absence of an appropriate response, a sanction may be imposed on the publisher for the service in question. [Continuous Assessment Framework - Mon espace santé Catalog - Version 2025](#)

10. I have been contacted to begin my evaluation

COMPLIANCE **ANS**

Initializing the evaluation

- I am contacted by the ANS team one month before the start of my ongoing evaluation.
- I receive my audit plan, which outlines the terms of my evaluation
- I have one month to submit the requested materials once my evaluation has begun.

11. I meet the criteria

Meeting the criteria

- I log in to the Convergence platform, where a new process will be made available to me
- I complete the qualification questionnaire, which validates the answers provided during the initial referencing.
- I complete the criteria and submit the supporting documents
- I confirm my submission

12. My application is being reviewed

Review of my application

- The team of experts responsible for ongoing evaluation is reviewing my application and the evidence of compliance.
- I respond to any requests for additional information.
- The application is reviewed by the referencing committee.

13. Presentation of the case to the committee

Presentation of the case to the committee

- The committee reviews the results of my audit.
- Feedback is provided to the publishers.

Check that my solution is connected to Mon espace santé

Point of attention

This step only concerns referencing solutions with data exchange.

Our advice

Hooking tests are carried out in parallel with the referencing request (previous step).

07. I carry out hanging tests

IMPLEMENTATION **GIE SESAM VITALE**

Connection tests for Mon espace santé

- I carry out the **technical tests** to connect to the APIs and send a **acceptance file** to the referencing process test team:
 - My file is satisfactory: I receive the terms and conditions for testing the connection to the Mon espace santé APIs in order to validate the integration of my solution.
 - My application is unsatisfactory: I start again and/or carry out additional tests
- For more information, you can consult [the referencing guide available here](#).
- The full specifications are available on editeurs.monespacesante.fr

The condition for referencing with data exchange

- Have a favorable opinion from the referencing commission, with data exchange authorized for certain purposes. The referencing window is the same via the Mon espace santé guided path on the [Convergence](#) platform;
- Pass technical connection tests, demonstrating their ability to use programming interfaces in a compliant manner;
- Get patient consent for data exchanges in Mon espace santé.

Need help?

For all my questions, I contact GIE SESAM-Vitale support at: centre-de-service@sesam-vitale.fr